



Saxon Road, London, E3

BUTLER  STAG





**Located close to Roman Road Market is this two double bedroom apartment, within walking distance of Mile End underground station and just a stroll to Victoria Park.**



- Two Double Bedrooms
- Fitted Kitchen
- Available 5th March
- Close to Roman Road Market
- Private Balcony
- Modern Bathroom
- Part Furnished
- Walking Distance to Mile End Underground

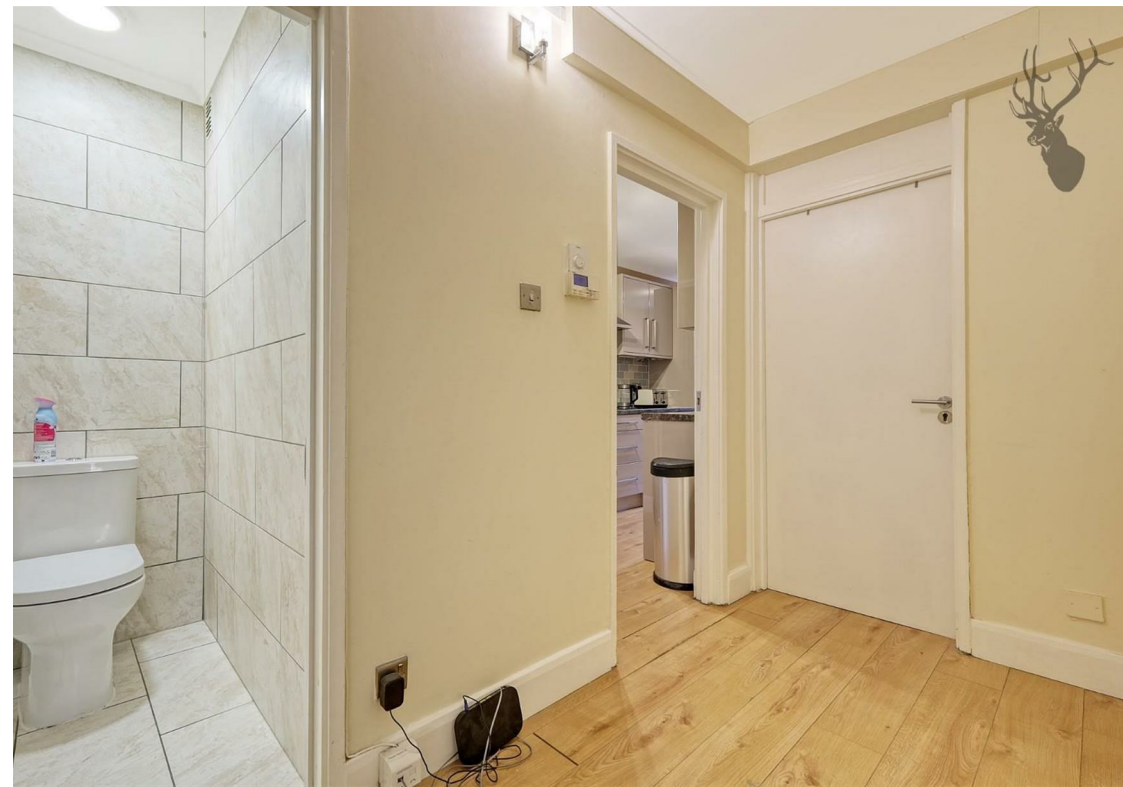
Being located next to Roman Road Market this two double bedrooomed apartment is available from 5th of March and is only a stroll from both Mile End tube station and the beautiful Victoria Park.

The property comprises of a large light lounge, two double bedrooms, a modern bathroom, and a fitted kitchen, it also benefits from a private balcony.

Situated within a short stroll to the Roman Road Market and within walking distance to both Mile End Tube Station and the open spaces of Victoria Park.



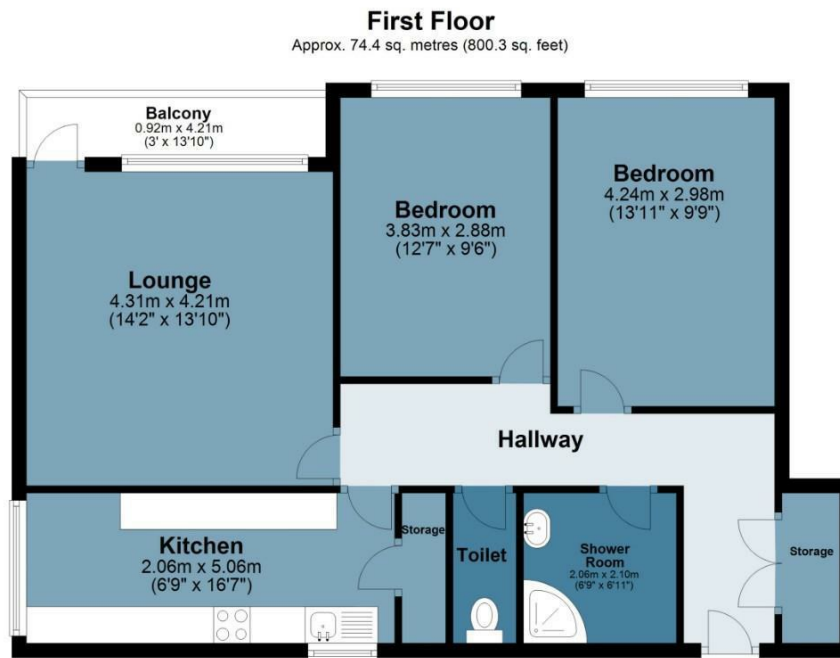




## Brodict House

Approx. Gross Internal Area 74.4 Sq M ( 800.3 Sq Ft )

BUTLER & STAG



Measurements are approximate and for illustration purposes only. While we do not doubt the accuracy and completeness, we advise you conduct a careful independent assessment of the property to determine monetary value.  
© @modephoto.uk www.modephoto.co.uk

IMPORTANT NOTICE - These particulars have been prepared in good faith and they are not intended to constitute part of an offer or contract. We have not performed a structural survey on this property and the services, appliances and specific fittings have not been tested. All photographs, measurements, floor plans and distances referred to are given as a guide and should not be relied upon.

BUTLER & STAG

☎ 020 8102 1236

🏠 508 Roman Road, Bow, London, E3 5LU

✉ bow@butlerandstag.com

[www.butlerandstag.uk](http://www.butlerandstag.uk)